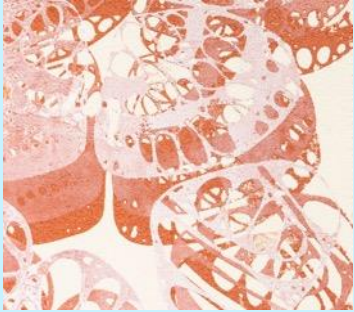
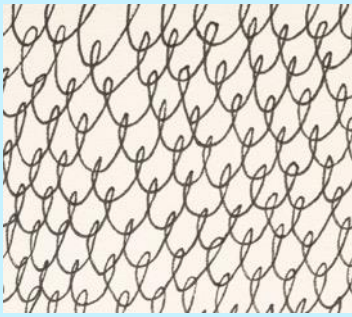




Port of Brisbane

Peter Keyte, Chief Operating Officer

October 2023



Acknowledgement of Country



Port of Brisbane Pty Ltd acknowledges the Traditional Owners of the lands and waters on which the Port of Brisbane operates – the Quandamooka, Turrbal and Yuggera peoples – and pay our respects to their Elders past, present and emerging. We acknowledge any First Nations people in attendance today.

*Artwork: Journey through the bay to the river, 2020.
Created by Delvene Cockatoo-Collins.*

Port of Brisbane Pty Ltd

A world-class port

- Queensland's largest multi-cargo port
- Over \$1.3 billion invested in capital works since 2010
- One of only three Australian ports to handle 8,500+ TEU container vessels
- National leader in port sustainability, including Sustainability-Linked Financing
- Owner and manager of the new Brisbane International Cruise Terminal
- Manage one of SEQ's largest industrial property portfolios
- Robust health and safety management systems
- Owned by four of the world's most experienced infrastructure investors:



Our business



Manage

139

Customer leases/licences across five port precincts



204

employees spanning a wide range of disciplines and experience



Approximately

1,870ha

footprint including 693ha of environmental areas



Approximately

\$190m

invested in port infrastructure works during FY23



Safety first

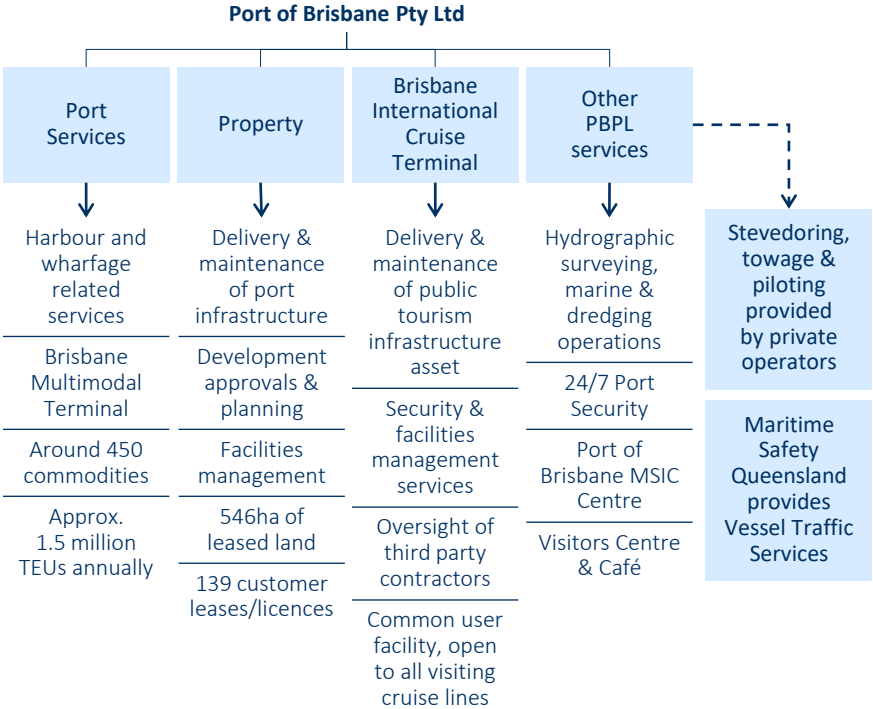
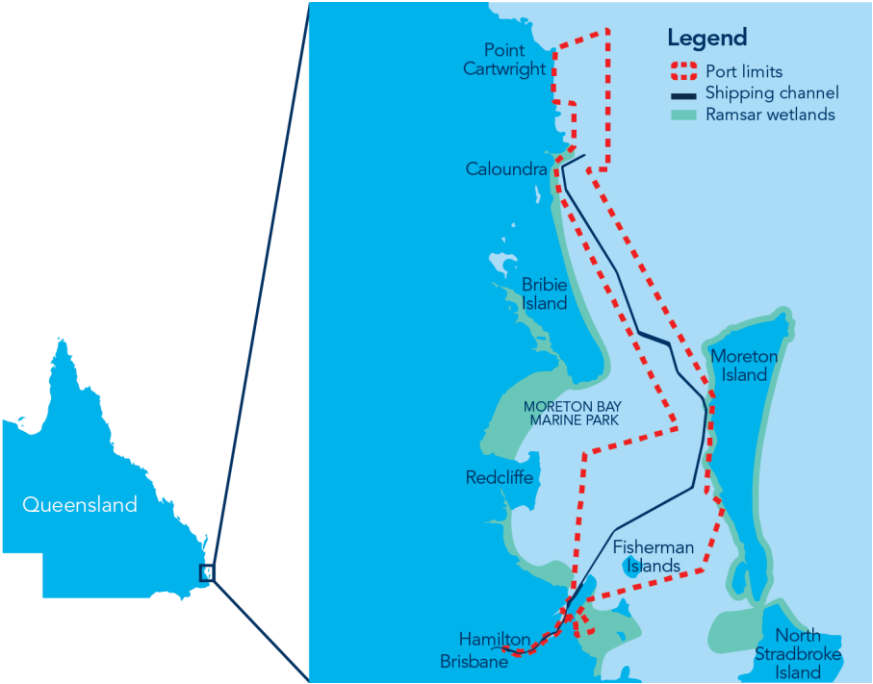


2,472

vessel calls annually

Financial year ending 30 June 2023

Our operations



Sustainability

Sustainability Program

Our Sustainability Program, which is at the core of our business strategy, is aligned with the United Nations' Sustainable Development Goals (UN SDGs). Fourteen of the 17 UN SDGs are relevant to our business.



Sustainability Achievements

In 2022/23 and for the fourth year running, Port of Brisbane achieved a **5-star GRESB rating** for infrastructure assets (Global Real Estate Sustainability Benchmark) and was the highest ranked port in the Australia – Port Companies: maintenance and operation category. Our overall score reached 98/100.

We have also maintained our **Bronze Accreditation** as a **Carbon Literate Organisation** for a second year.

Sustainability Report

Our annual Sustainability Report provides an overview of how we are progressing against our sustainability agenda and is available on our website.



2022/23 trade overview



A record

1.56m
containers



33.59m
tonnes of cargo
throughput



Approx.

95%
of Queensland's
containerised trade and 90%
of its motor vehicle imports



21.5%

of Australia's **east coast port**
container throughput



Approx.

\$55b

in **international trade** annually



Approx.

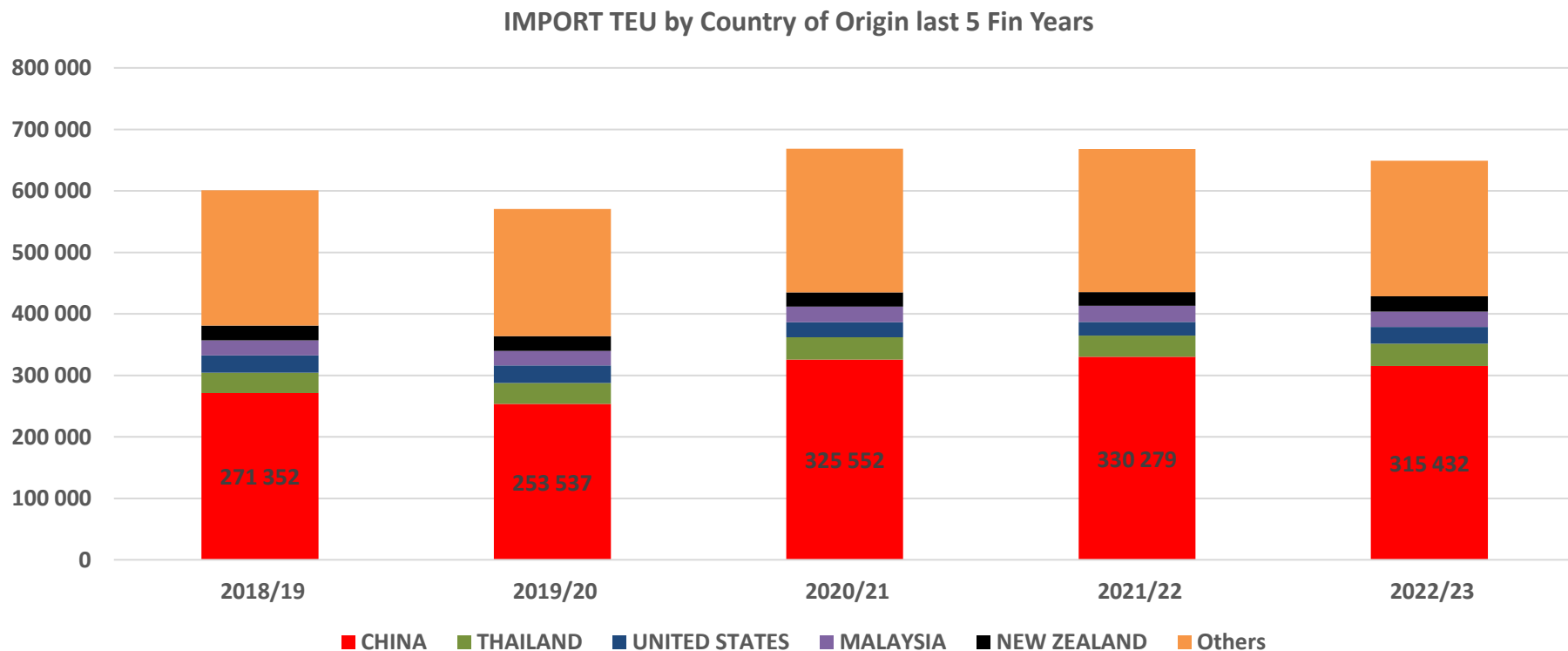
50%

of Queensland's **agriculture exports**

Financial year ending 30 June 2023

IMPORT TEU by Country of Origin

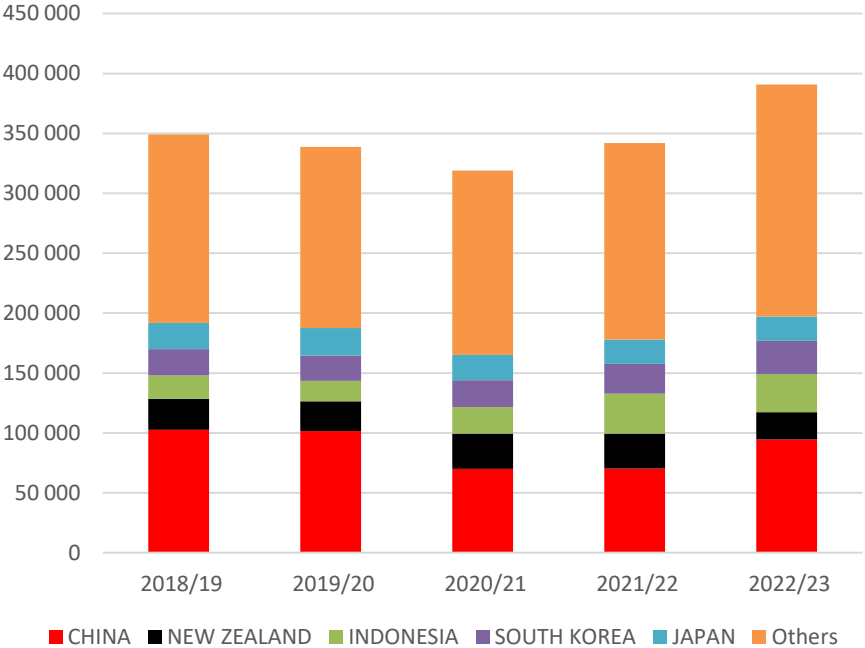
China is by far the largest import origin country; there is a vast commodity mix.



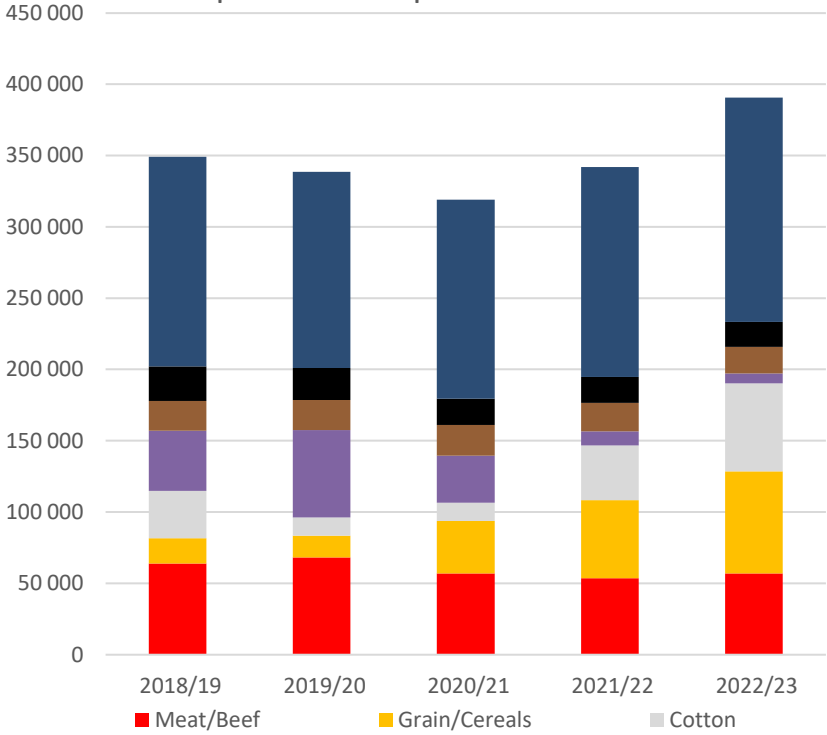
Export Containers – Destination Country and Commodities

China is the largest export destination.

Export TEU by Country of Destination last 5 Fin years



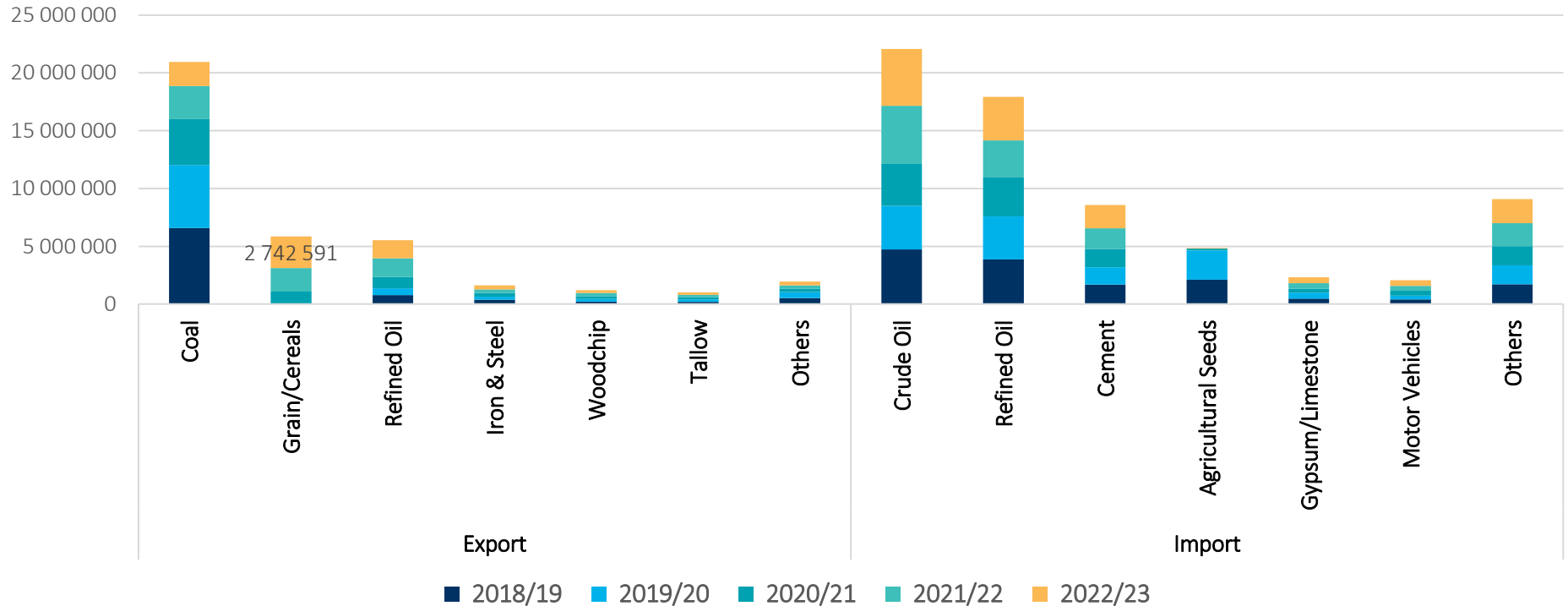
Export TEU - Top 6 commodities



Non-Containerised (Bulk and Break Bulk) Cargo Exports & Imports

A diverse commodity mix, though fuel products dominate total tonnages

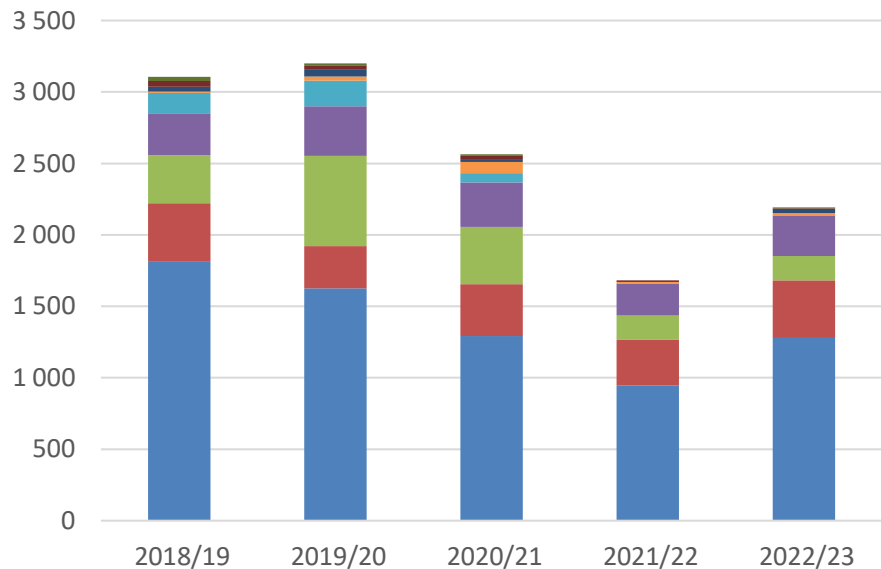
Top 6 Non-Containerised Export & Import Commodities



Trade with South Pacific Islands

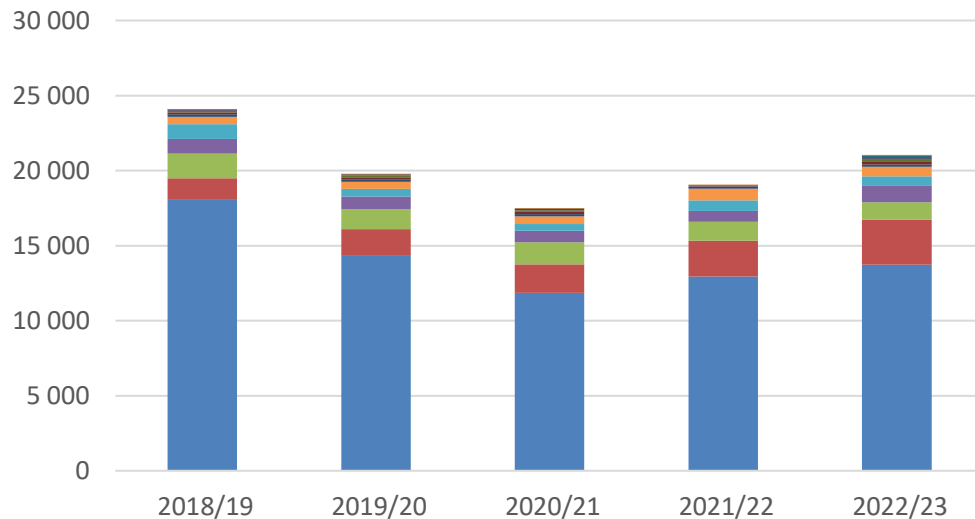
Container Trade with PNG is increasing

Import TEU (Full)



- PAPUA NEW GUINEA ■ SOLOMON ISLANDS ■ NEW CALEDONIA
- FIJI ■ AMERICAN SAMOA ■ FRENCH POLYNESIA
- VANUATU ■ SAMOA ■ TONGA

Exports TEU (Full)

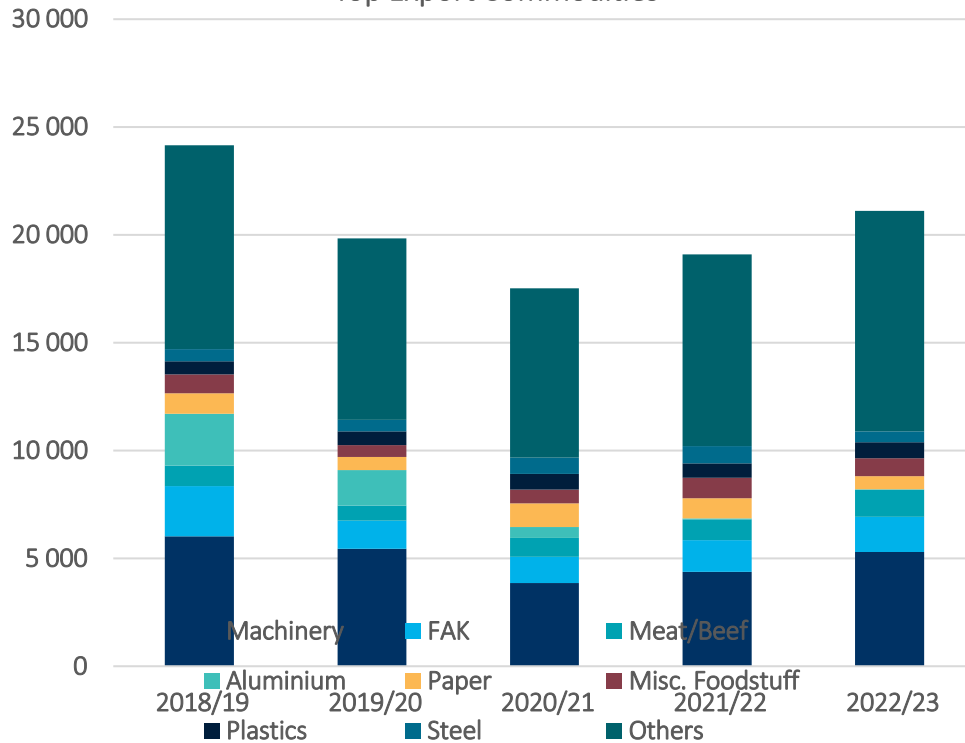


- PAPUA NEW GUINEA ■ NEW CALEDONIA ■ FIJI
- SOLOMON ISLANDS ■ NAURU ■ VANUATU
- SAMOA ■ FRENCH POLYNESIA ■ KIRIBATI
- TONGA ■ AMERICAN SAMOA ■ TUVALU

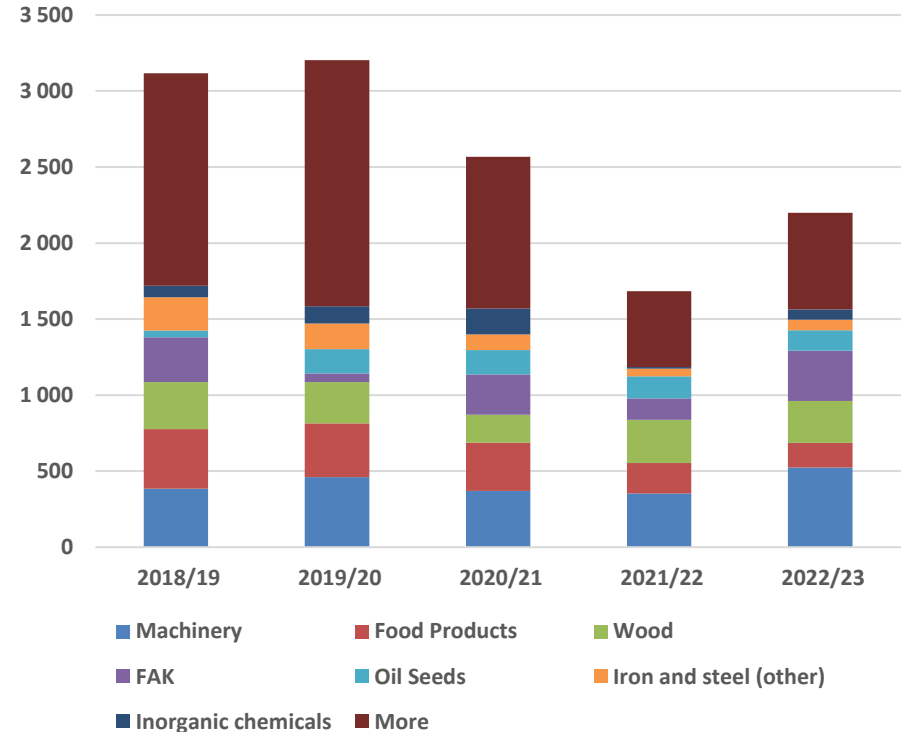
Trade with South Pacific Islands

Top Commodities

Top Export Commodities



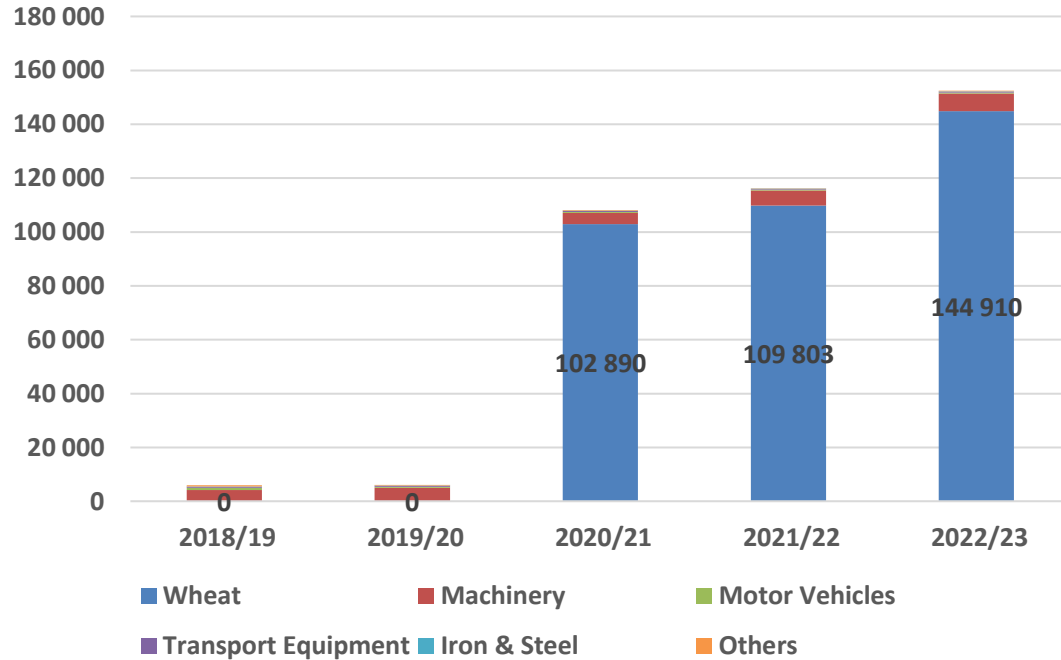
Top Import Commodities



Trade with South Pacific Islands

Bulk Wheat Exports to PNG have increased significantly over the last 3 years

Bulk & B/Bulk Exports to PNG



Brisbane International Cruise Terminal

World-class, dedicated cruise facility

Brisbane's new home for cruising

- AUD\$177 million investment by PBPL
- Purpose-built, dedicated cruise facility
- Adjacent to existing cargo port operations
- Deepwater access
- Construction completed in mid-2020 (during COVID)
- First vessel welcomed 2 June 2022

Multiple sailings linked to Indo-Pacific

- Potential for growth and investment in the region



Welcoming the world's biggest cruise lines

Anchored by our Foundation Partner, Carnival Australia and its brands



Our first full year of operations 2022/23

The restart of cruising from Brisbane was a resounding success



139

cruise ships
welcomed



Around

130

hard working staff support
each cruise ship call, from
across our partners



Approx.

\$940,000

contributed to the Queensland
economy each ship call



9,308

largest number of passengers in
one day (embark and disembark)



Over

667,000

cruise passengers transited
through the facility (embark,
disembark and transit)

Thank you



Disclaimer

All information contained in this document or presentation is and remains 'Confidential' and any person or entity in possession of this information will ensure that it is not disclosed to any other party without express written authorisation from Port of Brisbane Pty Ltd.

Copyright in this information remains with Port of Brisbane Pty Ltd or its related entities ('PBPL') and at all times the information remains the exclusive property of PBPL. All rights are reserved. Do not copy, disseminate or use, except in accordance with the prior written consent of PBPL.

Without limitation, disclosure of the information contained in these documents could prejudice the business, commercial and financial affairs of Port of Brisbane Pty Ltd, its associates or its related entities, or could diminish the commercial value of the information to those entities.

Port of Brisbane Pty Ltd and its related entities ('PBPL') shall not be liable for any loss or damage of any nature whatsoever due to any inaccuracies or errors, which may result from use of data supplied by others or prepared by PBPL. The data provided by PBPL is provided "as is" without warranty of any kind. PBPL does not guarantee or warrant the correctness, completeness, currentness, merchantability or fitness for a particular purpose of such data. This presentation should not be relied upon by any party. PBPL disclaims all responsibility to any other party for any loss or liability that the other party may suffer or incur arising from or relating to or in any way connected with the contents of this presentation, the provision of this presentation or data to the other party or the reliance on this presentation or data by the other party.